



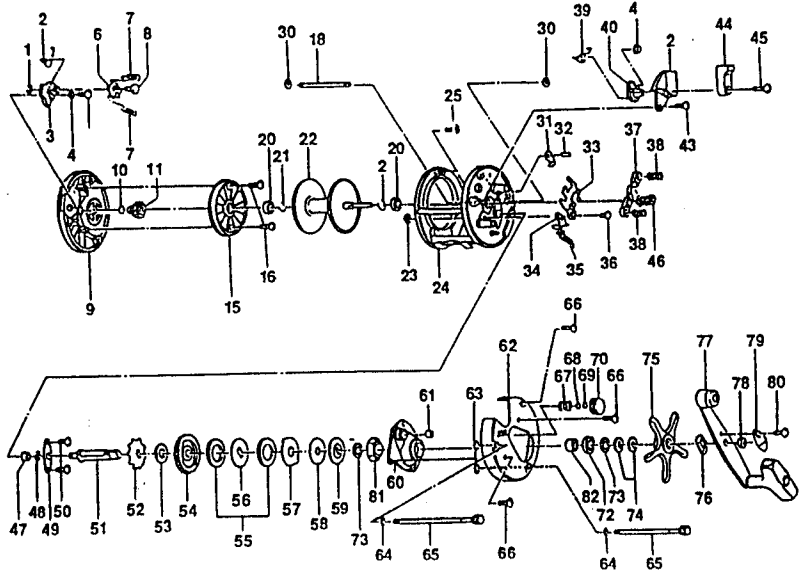
# IR425CX / IR435CX Iron Bigwater

## SPECIFICATIONS:

IR425: Hvy FW / Med Lt. SW  
 IR435: X Hvy FW / Med. SW  
 Line Cap.: 300 yds / 20 lb (IR425)  
 400 yds / 20 lb (IR435)  
 6.1:1 Gear Ratio  
 17.6 oz. (IR425) / 17.9 oz. (IR435)  
 Lever Clutch Spool Release  
 Continuous Anti-Reverse  
 3 Ball Bearings; 1 Roller Bearing  
 Inches Per Handle Turn (IPT) = 32.5

## FEATURES:

Machined, 1-Piece Aluminum Frame  
 Oversized, Multi-Disc (6 washer) drag system  
 Audible On/Off Bait Clicker  
 Non-Levelwind Retrieve  
 Anodized-Ceramic coated frame  
 Brass Magnum Gears  
 Stainless Steel Bearings  
 Counterbalanced T-style Handle Knob  
 Aluminum Side Plates  
 Machine Forged Aluminum Spool  
 COLOR: Beige



Key No.	Description	Part No.	IR425CX	IR435CX	Price	Key No.	Description	Part No.	IR425CX	IR435CX	Price
1	Click Pawl Post E-Clip	NX092-01	↔		0.30	46	Pinion Gear	LV011-01	↔		6.40
2	Bait Click Lever Spring	KV022-01	↔		0.30	47	Crank Shaft Bearing (L)	XX017-01	↔		5.36
3	Bait Click Lever	KV109-01	↔		0.75	48	Crank Shaft Retainer E-Clip	QW120-01	↔		0.26
4	Bait Click Lever Washer	KV038-01	↔		0.30	49	Crank Shaft Retainer	JX002-01	↔		0.57
5	Bait Click Lever Screw	AV125-01	↔		0.70	50	Crank Shaft Retainer Screw	JX107-01	↔		0.15
6	Bait Click Pawl	KV114-01	↔		0.80	51	Crank Shaft	NV008-01	↔		0.30
7	Bait Click Spring	KV110-01	↔		0.25	52	Ratchet	KV083-01	↔		0.95
8	Bait Click Pawl Post	KV098-01	↔		0.45	53	Ratchet Washer	QW111-01	↔		0.26
9	Left Side Cover Assy	KV323-02	↔		15.00	54	Drive Gear	LV012-01	↔		8.70
10	Spool Shaft Washer	KV328-02	↔		0.26	55	Drag Disc ~A~	AV059-01	↔		1.65
11	Oscillate Drive Gear	KV112-01	↔		0.75	56	Drag ~D~ Washer (L)	KV045-01	↔		0.90
15	Spool Cover	KV051-01	↔		6.65	57	Drag Key Washer	KV048-01	↔		0.90
16	Spool Cover Screw	AV125-01	↔		0.70	58	Drag Disc ~B~	KV059-01	↔		1.50
18	Line Guard	NV061-01	PV061-01		1.00	59	Drag ~D~ Washer (U)	NV045-01	↔		2.40
20	Spool Shaft Bearing	CW017-01	↔		7.52	60	Crank Shaft Guide	NV066-01	↔		3.40
21	Clip Ring	KV080-01	↔		0.26	61	Tension Knob Bushing	JX117-01	↔		0.59
22	Spool Assy	KV321-01	LV321-01		15.75/16.75	62	Right Side Cover	KV024-06	KV024-08		10.50
23	Kick Lever Guide Post E-Clip	NX092-01	↔		0.30	63	Thumb Screw O-Ring	JX073-01	↔		0.31
24	Frame Assy	NV301-02	PV301-02		26.20/27.20	64	Thumb Screw Washer	JX121-01	↔		0.21
25	Left Side Cover Screw	NV123-01	↔		0.15	65	Thumb Screw Assy	KV374-01	KV374-02		1.50
30	Line Guard E-Clip	QW120-01	↔		0.26	66	Right Side Cover Screw	QW123-01	↔		0.15
31	Anti Reverse Pawl Assy	KV363-01	↔		2.75	67	Tension Knob Spring	JX105-01	↔		0.31
32	Anti Reverse Pawl Post	JX098-01	↔		0.42	68	Spool Tension Washer	QW032-02	↔		0.52
33	Release Slider	KV039-01	↔		1.50	69	Cushion Washer	JX082-01	↔		0.21
34	Kick Lever	JX077-01	↔		0.57	70	Spool Tension Knob	XX033-01	↔		2.82
35	Kick Lever Spring	JX097-01	↔		0.15	72	Crank Shaft Bearing	Not used with new 1-way bearing			
36	Kick Lever Guide Post	JX102-01	↔		0.88	73	Crank Shaft Washer	JX038-01	↔		0.31
37	Pinion Yoke	JX025-01	↔		0.25	74	Spring "D" Washer	JX046-01	↔		0.67
38	Pinion Yoke Spring	JX040-01	↔		0.21	75	Star Drag	KV055-01	↔		3.50
39	Release Slider Cam Spring	KV104-01	↔		0.25	76	Handle Washer	NX054-01	↔		0.26
40	Release Slider Cam	KV141-01	↔		1.00	77	Handle Assy	KV318-02	↔		9.50
41	Release Slider Guide Bushing	JX068-01	↔		1.08	78	Handle Nut	QW003-01	↔		0.36
42	Release Lever Cover	KV143-01	↔		1.00	79	Handle Nut Cap	JX034-02	↔		0.36
43	Release Slider Screw	XX050-01	↔		0.15	80	Handle Nut Cap Screw	QW123-01	↔		0.15
44	Release Lever	KV142-01	↔		1.95	81	One Way Bearing Assembly	NV363-01	↔		9.50
45	Release Lever Screw	KV053-01	↔		0.90	82	One Way Bearing Sleeve	NV052-01	↔		1.00

= Part modified after D8 (4-'98) to allow bigger 1-way clutch. Previous reels need all these parts if replacing an original part; no original parts.

<b>MODEL</b> INTRODUCED: 1998	<b>EFFECTIVE DATE OF PARTS LIST/DIAGRAM:</b> Sept. '98	<b>DISCONTINUED:</b> N / A
----------------------------------	--	----------------------------

Prices subject to change without notice. Prices do not include postage and handling.

PLEASE ORDER BY PART NUMBER

Zebco, P.O. Box 270, Tulsa, Ok. 74101; 918-831-6965 Phone or 800-FIXREEL (349-7335) FAX

